



## Technical Service BULLETIN

November 28, 2005

Title:

# TIRE PRESSURE SENSING TRANSMITTER ACTIVATION PROCEDURE

Models:

'06 Prius

P D084-05

PRE-DELIVERY SERVICE

**Introduction** The 2006 model year Prius is equipped with a direct type Tire Pressure Warning System (TPWS). A tire pressure sensing transmitter is built into each tire valve, and the measured tire pressure data is transmitted through a Tire Pressure Warning System antenna to the tire pressure monitoring system receiver.

During Pre-Delivery Service (PDS), the tire pressure sensing transmitters must be activated according to the procedure in this bulletin.

**Applicable Vehicles**

- **2006** model year **Prius** vehicles.

### Reference Information

#### NOTE:

- After all the tire pressure sensing transmitters are activated, the flashing Low Tire Pressure Warning Light goes OFF.
- The Diagnostic Trouble Codes (DTCs) listed below may be stored in the system until the tire pressure sensing transmitters are activated.
- The codes will automatically clear when the tire pressure sensing transmitters are activated.

DTC *1	DTC *2	DTC
11	C2111	Transmitter ID1 Inactive (Sleep Mode)
12	C2112	Transmitter ID2 Inactive (Sleep Mode)
13	C2113	Transmitter ID3 Inactive (Sleep Mode)
14	C2114	Transmitter ID4 Inactive (Sleep Mode)

**DTC \*1:** Indicated by flashing of the Low Tire Pressure Warning Light.



**DTC \*2:** Indicated on the Toyota Diagnostic Tester.

### Warranty Information

OP CODE	DESCRIPTION	TIME	OFP	T1	T2
N/A	Not Applicable to Warranty	—	—	—	—



**Required  
SSTs**

ITEM NO.	SPECIAL SERVICE TOOLS (SSTs)	PART NUMBER	QTY	DRW**
1	<b>Toyota Diagnostic Tester Kit*</b> NOTE: <ul style="list-style-type: none"> <li>All components from this kit/set are required</li> <li>12 Megabyte Diagnostic Tester Program Card (P/N 01002593-005) with version 13.0a Software (or later) is required</li> </ul> 	TOY220036	1	9
2	<b>CAN Interface Module Kit*</b> NOTE: <ul style="list-style-type: none"> <li>All components from this kit/set are required</li> </ul> 	01002744	1	9

\* Essential SSTs.

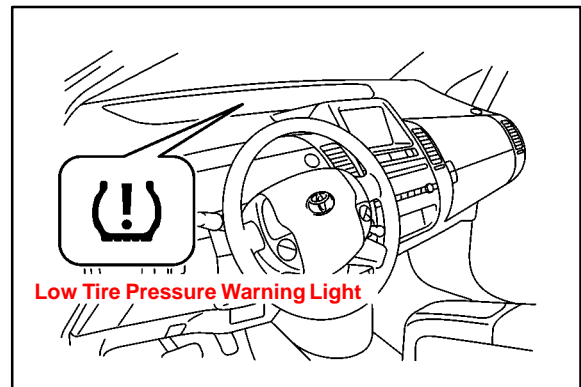
\*\* Refers to drawer number in SST Storage System.

**NOTE:**

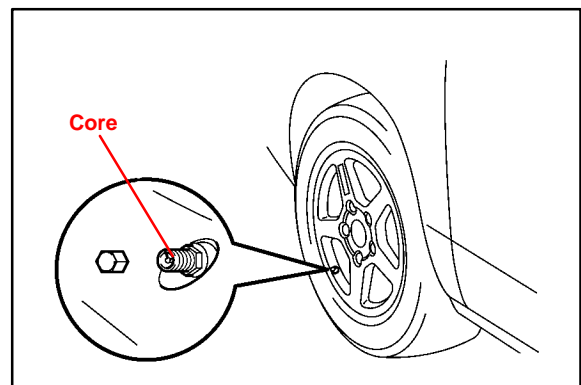
**Additional Diagnostic Tester Kits, CAN Interface Modules, Program Cards, or other SSTs may be ordered by calling SPX/OTC at 1-800-933-8335.**

**Activation  
Procedure**

1. Turn the power switch to the "IG-ON" mode and check that the Low Tire Pressure Warning Light blinks.

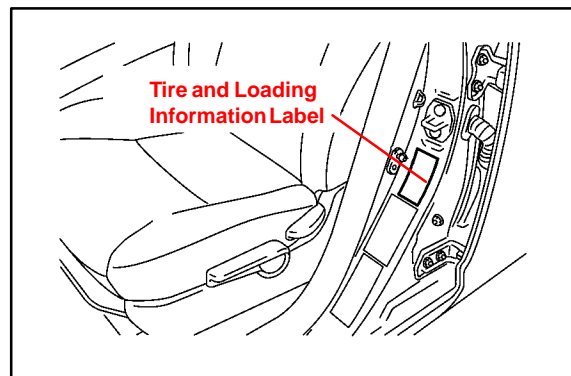


2. Press the valve core to reduce the tire inflation pressure rapidly by 6 psi (0.4 kgf/cm<sup>2</sup>, 40 kPa), or more, within 30 seconds. This operation is required for the system to be activated and must be performed for each tire (except the spare tire), one at a time.



**Activation  
Procedure**  
(Continued)

3. Adjust all tires to the standard tire inflation pressure, as indicated on the tire and loading information label on the vehicle.



4. Push and hold the Tire Pressure Warning "SET" switch for 3 seconds until the Low Tire Pressure Warning Light blinks 3 times. Ensure the Low Tire Pressure Warning Light goes OFF. When the Low Tire Pressure Warning Light goes OFF, it is necessary to leave the power switch in "IG-ON" mode for several minutes to allow the TPWS ECU to initialize with the current tire pressure.

